

### Woodbank Timber Ltd. – QUALITY UC4 KD PINE POST MATERIAL

Woodbank Timber are committed to providing – a reliable stock holding of the very best quality in ground post material available. This short presentation provides details of the UC4 Warranty Post material we supply.



## Why Treat Timber?

### 4 Enemies of Timber

1. Fungi

2. Insects

3. Marine Borers

4. Moulds

### Heartwood

- Naturally durable due to presence of toxic extracts
- Less permeable to preservative treatments – this is species dependant

*Permeable = Ability to allow (in this case) liquid to flow through the cells*

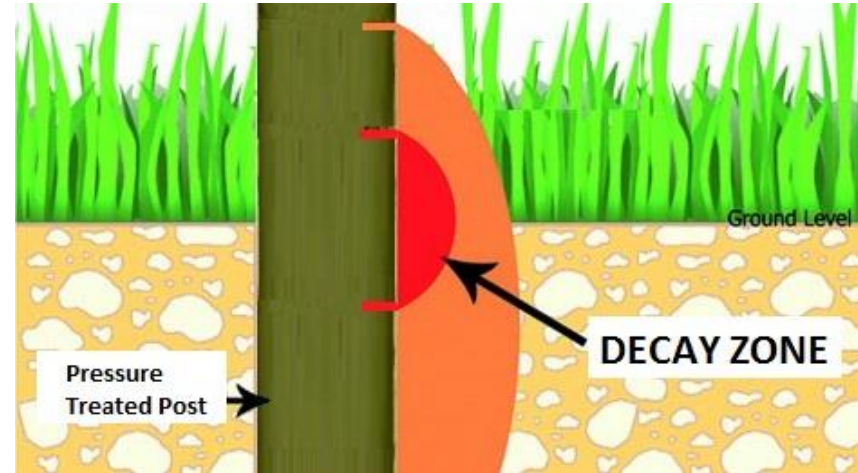
### Sapwood

- Little Natural durability in most softwoods
- Rich in starch and sugars – which promotes fungal growth
- Perishable but more permeable to preservative treatments

### In ground contact timber – What is the problem? Why are fencing timbers rotting and failing?

#### 1. Timber treatment chemical changes

CCA (Chromated copper arsenate) around from the 1930s until 2004. Arsenate was shown to leach from the timber and as such very tight restrictions were placed upon the use of CCA. The resulting solution was to replace this chemical with ACQ (Alkaline Copper Quaternary). ACQ is seen as a “greener” preservative and a more sustainable option.





#### 2. Poor Treatment Practice

ACQ requires the raw material to be prepared correctly prior to treatment in order to ensure the chemical's efficacy is equal to that of CCA. This involves various additional manufacturing processes, which are often not adhered to by all timber treatment processors. Therefore, a substandard product is presented to the market. There are British Standards which govern best practice when treating timber namely BS8417

#### 3. Commercially available Species for UK Sawmills

Close to 12% of the UK land is forest. 70% of which is Softwood. Around ½ of this commercially available softwood forest in the UK is Spruce. Used commercially for its applications in construction and for its speed of growth – normally felled between 30-45 years. Spruce however is not ideal for in ground use. Pine accounts for only just over ¼ of commercially available softwood in the UK despite its more suitable in ground attributes.

## UC4 Material – What’s the difference? Spruce vs. Pine – Which to choose?

Species	Treatability Classification*	Durability Class (Heartwood only)*
<b>Spruce</b>	Class 3 - Difficult to treat 	Class 4 - Slightly Durable 
<b>Pine</b>	Class 1 - Easy to Treat 	Class 3/4 - Moderate to Slightly Durable 

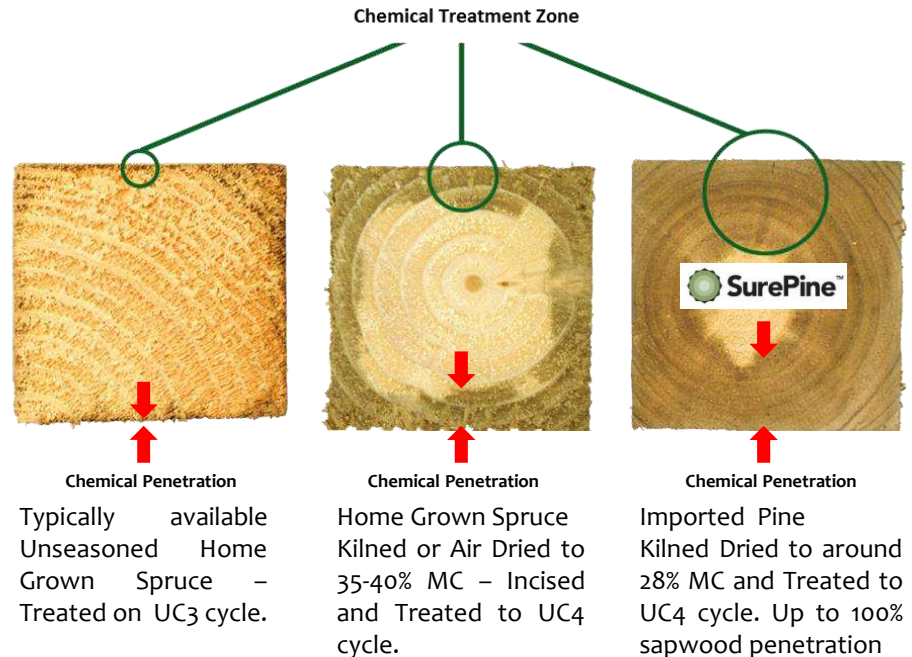
\* Based on EN 350-2:1994 Classifications

According to the British Standard for Durability of Wood and wood-based products – Natural durability of solid wood (BS EN350-2:1994). Pine possesses a naturally more durable heartwood and a much more treatable sapwood, making it a much more suitable species than Spruce for in ground applications.

USE CLASS TABLE	
Use Class (UC)	Use
1	Above ground, covered. Permanently dry, insect risk.
2	Above ground, covered. Occasional risk of wetting.
3a	Above ground, coated. Exposed to frequent wetting.
3b	Above ground, uncoated. Exposed to frequent wetting.
<b>4</b>	<b>In contact with ground or fresh water. Permanently exposed to wetting.</b>

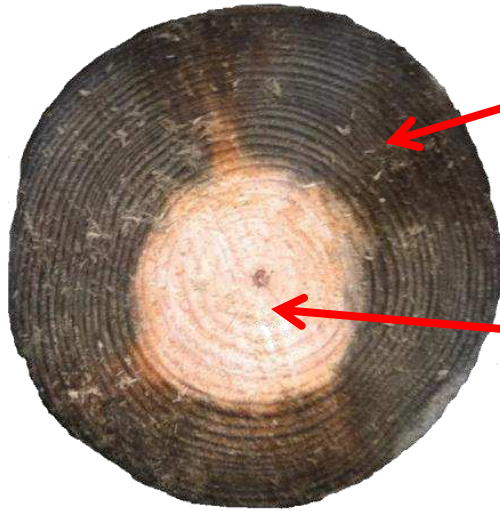
Sapwood of all wood species has a durability classification of 5 (not durable). This means that it is important to ensure this part of the timber is protected through the timber preparation and treatment process. The natural characteristics of both Spruce and Pine are different, which in turn directs the user to making the correct species choice for the correct application. Simply put - **Pine for in ground, Spruce for above ground.**

Woodbank Timber recommends when wishing to achieve a long service life – only imported Kiln Dried Pine UC4 material is used for in ground applications in accordance with BS 8417.



# SurePine

## Assured 15year Warranty



IMPORTED Kiln Dried Pine offers up to 100% Sapwood penetration of the Chemical treatment, not possible with Spruce. Sapwood is the part of the timber which is non durable and most susceptible to fungal and insect attack it needs to be protected.

Heartwood is the part of the timber which provides structural support for the tree – it is naturally durable and resistant to decay.

Kiln Dried Pine - Permeable Sapwood for deep penetration of chemical ✓

Classified as "Easy to treat" within BS EN 350:2. ✓

No incising of Pine sapwood required - avoid using less suitable species ✓

Each SurePine product is branded for quality assurance and traceability ✓

UC4 treated in accordance with BS 8417 ✓

Available in Machine Rounded, Peeled & Pointed & Square Sawn ✓

UK wide distribution - to large Stockist's and distributors ✓

*\*Terms & Conditions Apply*

## How to Identify a.....



### UC4 PINE POST



Each individual post is end stamped with a logo and a three digit number. These numbers identify the year and when within the year the timber was treated – thus ensuring each post can be effectively traced.

Tel: (01473) 220112 Fax: (01473) 230805

[www.woodbanktimber.co.uk](http://www.woodbanktimber.co.uk)

Woodbank Timber Ltd, Eagle Wharf, Helena Road, Ipswich, IP3 0BT  
Registered in England No. 07780544 VAT no. 121250865